

Odenton Commerce Centre - RETAIL/OFFICE

1413 Annapolis Road, Suite 201, Odenton, MD

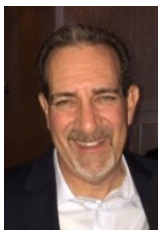
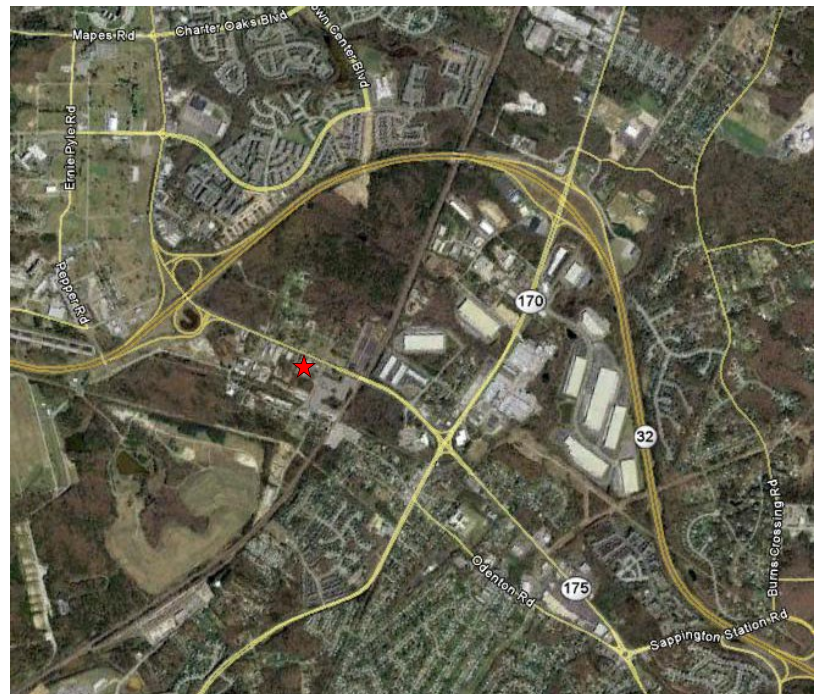


in the Odenton Town Center Core

Daytime Population 169,259
Average HH Income \$117,534

- 990 sq. ft.
- \$20.00 sq. ft. + utilities
- Three Offices & Reception Area
- Restroom
- Direct Private Entrance
- Two story/Elevator served
- Free Parking
- Retail & Office
- Great visibility
- Zoning: Town Center
- Traffic Counts:

@ Rte 175	25,000
@ Rte 32	50,000
- Near two PUDs of 8,000 homes and 1,100+ newly constructed residences
- Just 2 minutes from Fort Meade and 2 blocks to MARC train



Contact:
Stuart Title
stuart@ajprop.net
410-551-9116

AJP PROPERTIES
www.ajprop.net

8373 Piney Orchard Pky., Odenton, Md.



Disclaimer: All information regarding property(ies) offered is from sources deemed reliable; but no warranty is made as to the accuracy thereof and same is submitted subject to errors, omissions, change of price or conditions, prior sale, rental or withdrawal without notice.