

ODENTON HEALTH & TECHNOLOGY

1150 Annapolis Road, Odenton, MD



CLASS A OFFICE SPACE IN THE ODENTON TOWN CENTER.

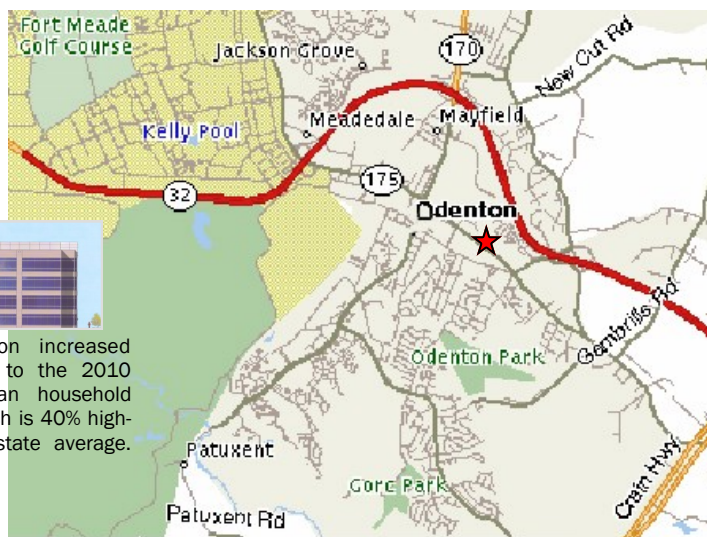
Daytime Population of 175,612
1,200+ residences newly constructed
Average HH Income of \$102,285
Two miles to Fort Meade

- New Construction
- Great for Office; Medical; DoD; Higher Education
- 64,000 sq. ft. Class A facility
4 floors at 16,000 sq. ft. per floor gross in Campus Setting
- Ample parking
- Energy efficient building
- Building signage for Signature Tenant
- Located between Baltimore & Washington, D.C., Columbia & Annapolis
- Easy Route 32 access
- Opposite major shopping center
- Near two PUD's of 8,000+ homes & 1,200 new units
- Local bus service from Fort Meade, NSA, BWI, Arundel Mills & the MARC train station which is one mile away
- On site property management

Join these Local Businesses

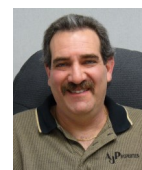


The Odenton population increased 80.8% from the 2000 to the 2010 census and the median household income rose 51.8%, which is 40% higher than the Maryland state average.
City-data.com



AJP PROPERTIES
www.ajprop.net

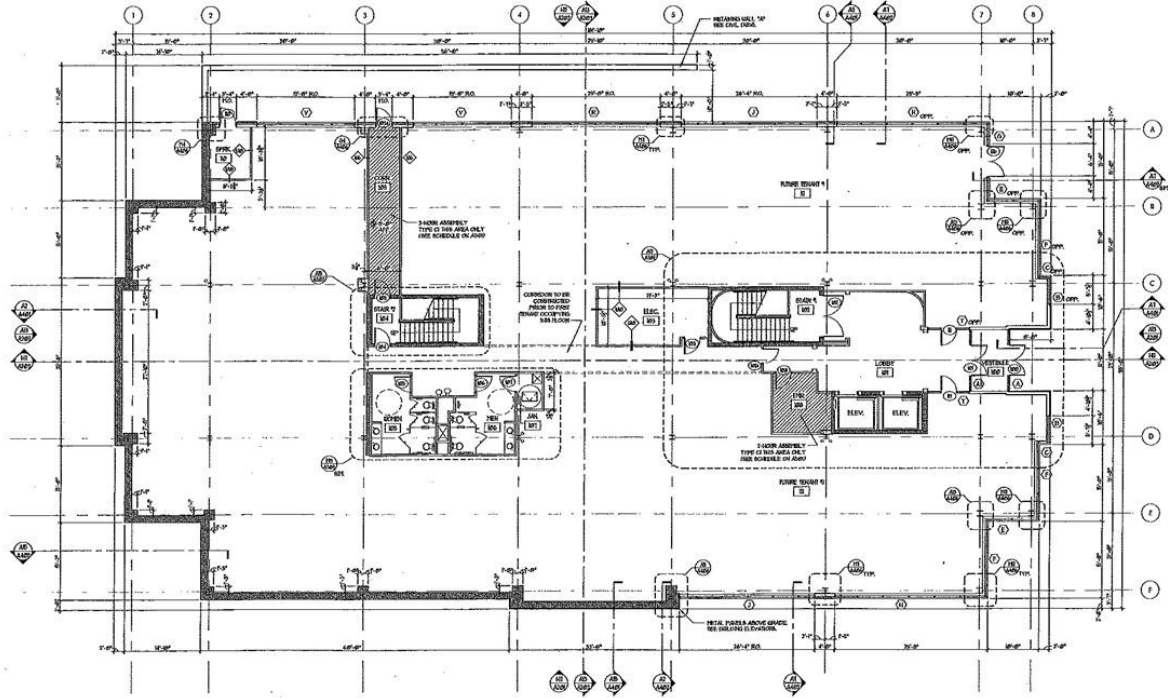
8373 Piney Orchard Pky., Odenton, Md.



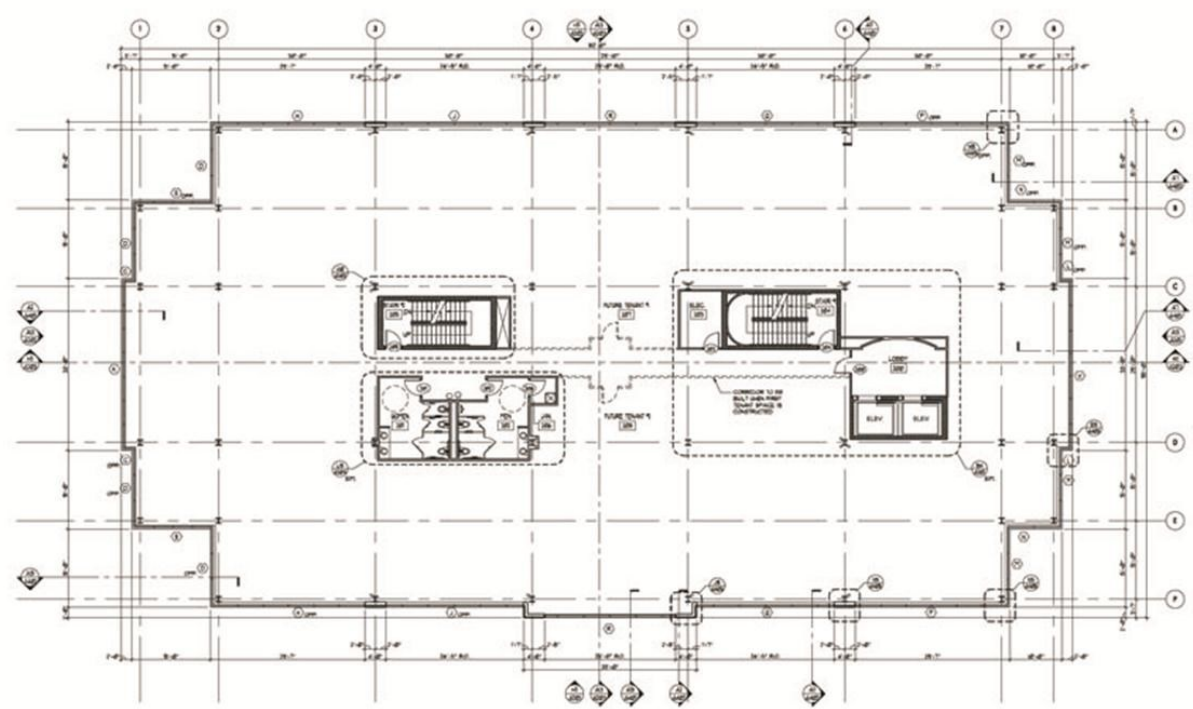
Contact:
Stuart Title
stuart@ajprop.net
410-551-9116

ODENTON HEALTH & TECHNOLOGY

1150 Annapolis Road, Odenton, MD



E10 FIRST FLOOR PLAN
SCALE: 1/8"=1'-0"



D9 FLOOR PLAN - FLOORS 24
SCALE: 1/8"=1'-0"

