

3205 Fort Meade Road

Laurel, MD

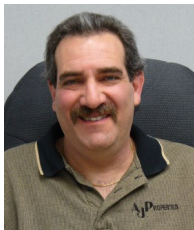
FOR SALE or LEASE



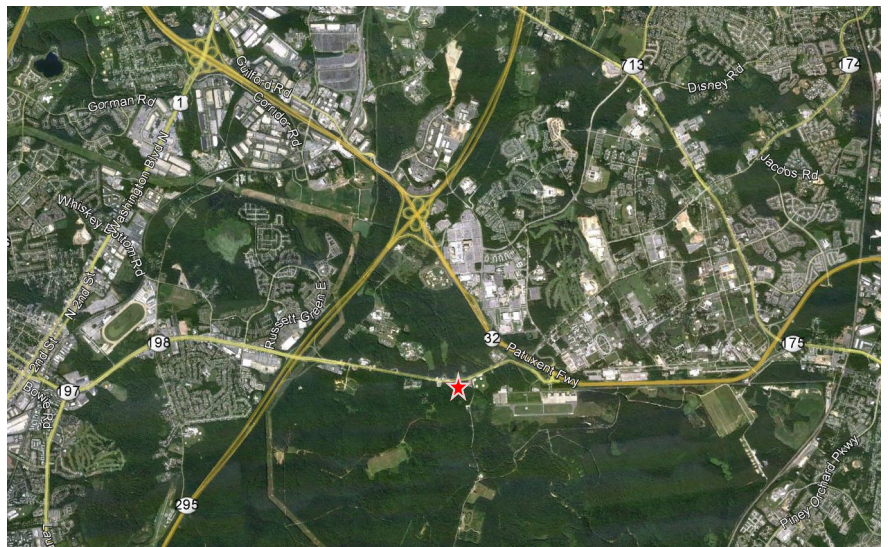
- Sale: \$449,000
Lease: \$4,000/month
- 2.15 acres
- 2 sheet metal structures
- Fenced yard
- Existing well & septic
- Zoned W-1
- Great Location! < 20 miles to Baltimore, Washington D.C. & Columbia
- .8 miles from Tipton & MD 32 roundabout
1 mile to Ft. Meade Gate
1.5 miles to NSA Gate
- 1.2 miles to MD 295
- Closest property to Fort Meade from the west
- Adjacent to Ft. Meade ball fields & Patuxent Research Refuge on 12, 800 acres.
- Easy access to Fort Meade, NSA and Tipton Airport.

1 Mile Radius
Median HH Income—\$117,762

5 Mile Radius
Daytime Population— 126,099
additionally
Ft. Meade Daytime Population—114,000



Contact:
Stuart Title
stuart@ajprop.net
410-551-9116



AJP PROPERTIES
www.ajprop.net

8373 Piney Orchard Pky., Odenton, Md.

