

OFFICE SPACE AVAILABLE

1223 Annapolis Road, Odenton, MD



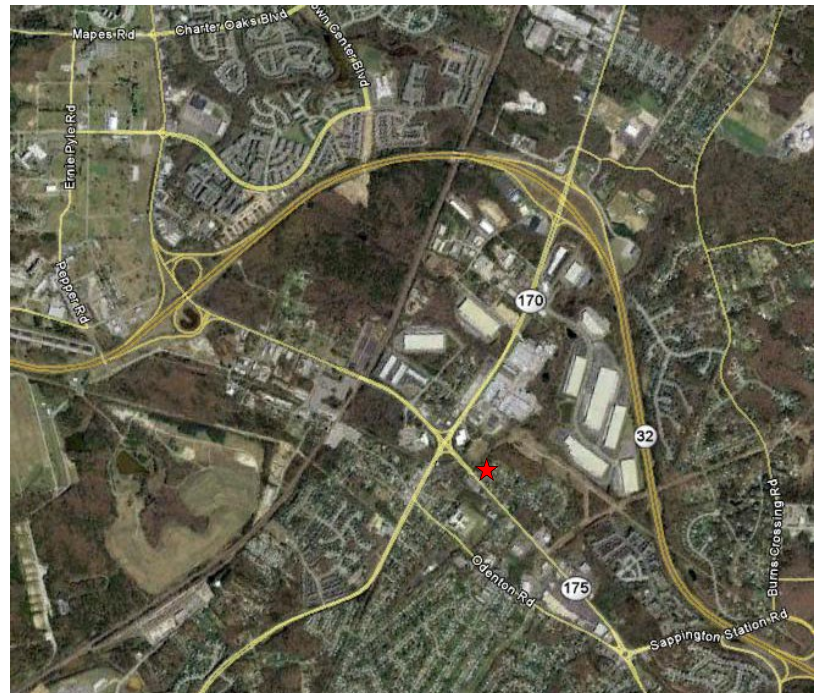
- 960 sf available
- 4 Offices with Reception and Break Areas
- \$20.00 sf + utilities
- Great visibility
- Zoning: Town Center
- Located on Route 175 with 25,000 trips per day.
- Near two PUDs of 8,000 homes and 1,100 new constructed residences
- Just 2 minutes from Fort Meade and the MARC train



Odenton Town Center

Daytime Population — 175,612
Average HH Income—\$102,285

IN THE ODENTON TOWN CENTER



Contact:
Stuart Title
stuart@ajprop.net
410-551-9116

AJP PROPERTIES
www.ajprop.net

8373 Piney Orchard Pky., Odenton, Md.

Member of



Board Member:
FORT MEADE
ALLIANCE