

# Pre-Construction Lease Rates

**Contact:**  
**Stuart Title: 410-551-9116**  
**stuart@ajprop.net**



## Odenton Health & Technology Campus

Annapolis Road / MD Route 175  
Odenton



Coming or here as part of  
Fort Meade's BRAC:

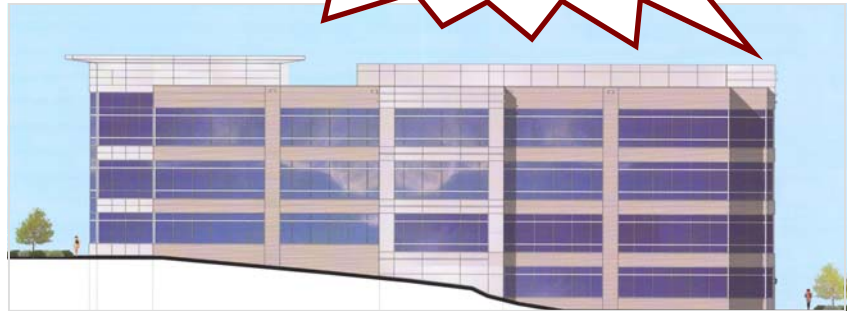
Defense Information Systems Agency  
(2010) 5,600 personnel in 1.4M sq. ft.

Media and Publication Activities  
(2008 & 2010) 607 personnel in  
186,000 sq. ft.

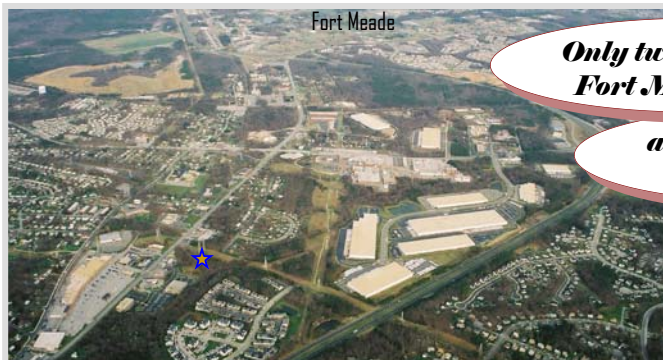
Defense Military Department Adjudi-  
cation Activities (2010) 584 person-  
nel in 250,000 sq. ft.

*and now welcoming*

U.S. Cyber Command (2009)  
1,000+ personnel



- 64,000 sq. ft. Class A Office
- 4 floors at 16,000 sq. ft. per floor gross
- 5:1 parking ratio
- Energy efficient building
- SCIF adaptable
- **Building signage for Signature Tenant**
- Located between Baltimore & Washing-  
ton, D.C., Columbia & Annapolis
- Easy Route 32 access
- Adjacent to Johns Hopkins Odenton-  
Meade Medical Center & Chiron Tech-  
nology Services, Inc. (providing informa-  
tion technology to the US Defense and  
Intelligence Communities) located in  
64,000 sq. ft. office in campus setting
- Across from major shopping center
- Near two PUD's of 8,000+ new homes
- Local bus service to Fort Meade, NSA,  
BWI, Arundel Mills & the MARC train  
station which is one mile away
  - On site property management



**Only two miles to the  
Fort Meade gate...**

**and four miles to the  
NSA gate!**

A. J. Properties, Inc.

8373 Piney Orchard Parkway, Odenton, Maryland  
www.ajprop.net info@ajprop.net

